



# MONTHLY MEMBERSHIP PROGRESS REPORT

District 15

Results as of: 3/31/2017

GMT: Kenneth Schwols

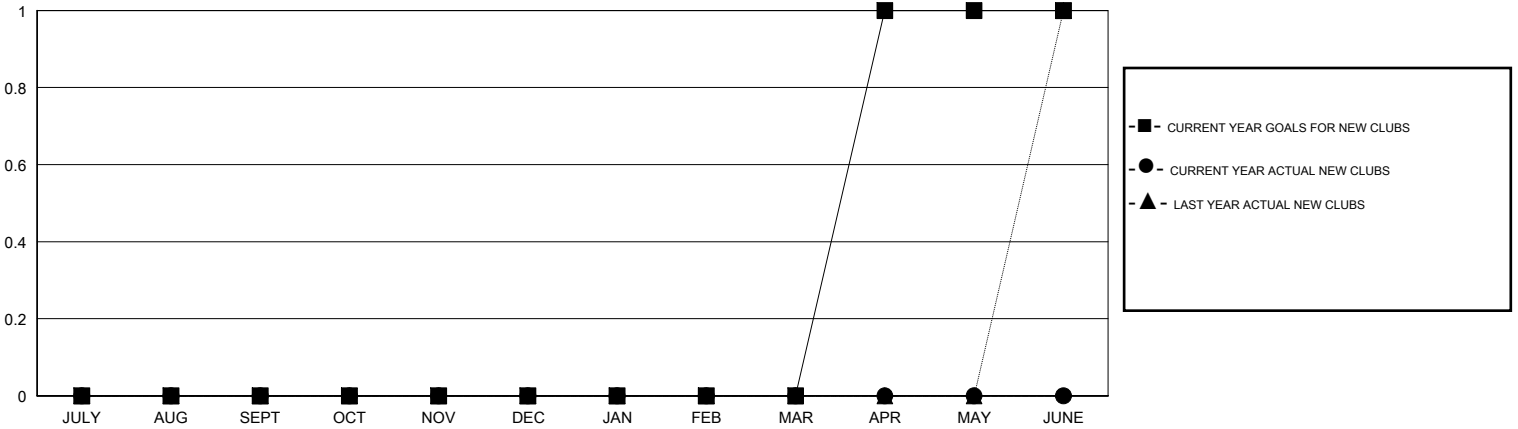
LOCATION WYOMING

GMT CA

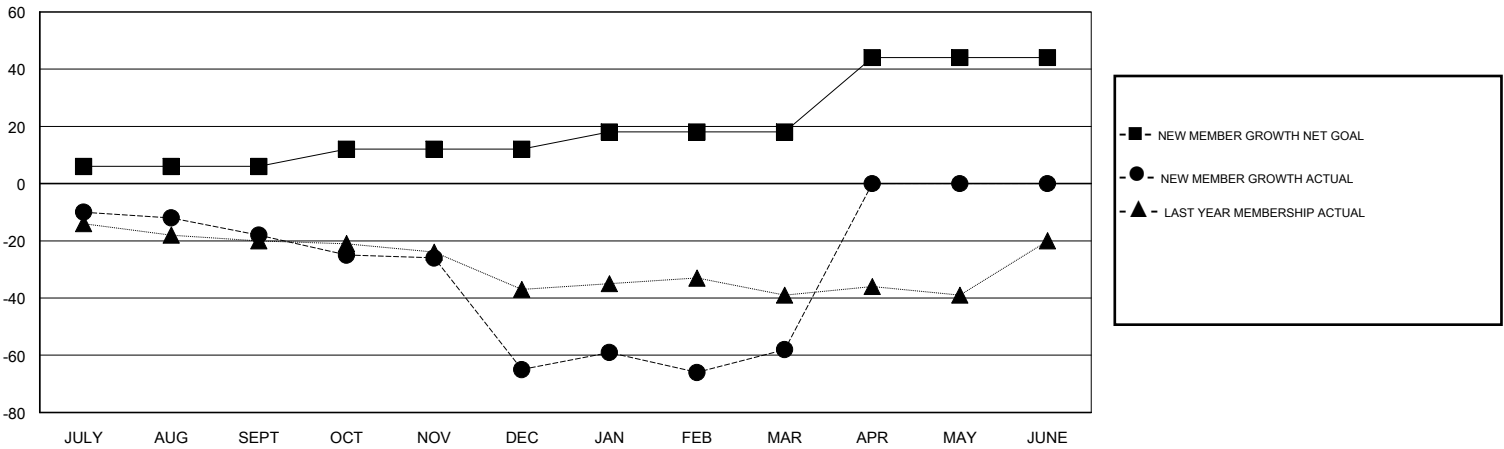
Clubs			
RESULTS FOR 2016-2017			
QUARTER	NEW CLUB GOAL	NEW CLUBS	DROPPED CLUBS
JULY/AUG/SEPT	0	0	0
OCT/NOV/DEC	0	0	1
JAN/FEB/MAR	0	0	0
APR/MAY/JUNE	1	0	0

Members			
RESULTS FOR 2016-2017			
QUARTER	NEW MEMBER GROWTH NET GOAL (not reinstated or transfers)	NEW MEMBER GROWTH ACTUAL (not reinstated or transfers)	DROPPED MEMBERS ACTUAL (including transfers)
JULY/AUG/SEPT	6	7	25
OCT/NOV/DEC	6	18	65
JAN/FEB/MAR	6	24	17
APR/MAY/JUNE	26	0	0

GOALS AND ACTUAL NEW CLUBS CUMULATIVE



GOALS AND ACTUAL MEMBERS CUMULATIVE



DROPPED CLUBS: 1	24 CLUBS OF 45 ADDED 1 OR MORE NEW MEMBERS	<u>GENDER DISTRIBUTION</u>	
DROPPED MEMBERS		MALE	924 (81.41%)
DECEASED	21	FEMALE	211 (18.59%)
CLUB CANCELLED	16	TOTAL FAMILY UNIT MEMBERS	107
OTHER	70	FAMILY MEMBERS PAYING HALF DUES	54
TOTAL	107		

[CLICK HERE FOR CUMULATIVE MEMBERSHIP DATA](#)